



# RED HILL MEWS

## OLDSWINFORD



**A NEW DEVELOPMENT OF 3 TWO BEDROOM APARTMENTS**



## THE SPECIFICATION

### KITCHEN

- High quality Howdens kitchen units
- Mixer tap
- Integrated Lamona gas hob
- Lamona cooker hood
- Integrated Lamona electric oven
- Integrated white goods
- Laminate flooring & tiled walls

### BATHROOM

- Towel warmer to bathroom

### INTERNAL FINISH

- All room walls and ceilings decorated white
- Waxed stairs
- All other internal woodwork finished in white
- Flooring: Kitchen/Hallway/Living Room - laminate, Bathroom - tiles and Bedrooms - grey carpet

### EXTERNAL FINISH\*

- Tarmac driveway and parking bays
- Pathway to front doors
- External garden tap
- Boundary picket fencing
- Rear garden with paved patio area

### ELECTRICAL

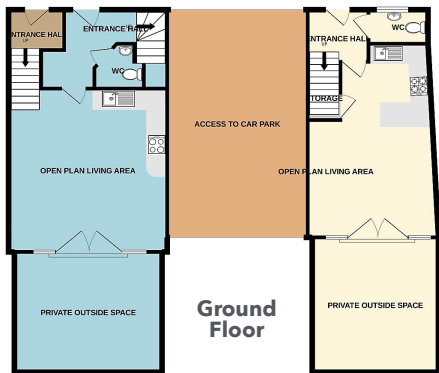
- Light to the front and rear doors
- Open Reach Point
- Downlights to Kitchen, Hall & Bathrooms
- Pendant light fittings to remaining rooms
- Brush chrome electrical sockets

### ENERGY

- Gas combination boiler
- Gas centrally heated radiators

### TENURE

- Advised 999 years on lease from completion date.
- Purchaser will have part share of freehold.
- Service management charge approximately £200 per annum.



Ground Floor



First Floor



Second Floor

\*Agent's Note: Second floor apartment has no private outdoor space, but has access to communal areas.

Whilst every attempt has been made to ensure the accuracy of the floorplan contained here, measurements of doors, windows, rooms and any other items are approximate and no responsibility is taken for any error, omission or mis-statement. This plan is for illustrative purposes only and should be used as such by any prospective purchaser. The services, systems and appliances shown have not been tested and no guarantee as to their operability or efficiency can be given. Made with Metropix ©2022.

We recommend that you inspect the full specification prior to reservation and confirm all details with Lex Allan Grove at point of purchase. Specification is correct at the time of printing. All images are for illustration purposes only.



Lex Allan Grove Land & New Homes is a division of Lex Allan Grove Ltd with offices in Stourbridge, Hagley and Halesowen. As a specialist New Homes service provider we have the expertise, resources and commitment to ensure a streamlined customer journey for both our buyers and the housebuilder for whom we act.

With our years of experience, we know what makes our business tick and how to successfully sell or let every type of property in every kind of market. We are privately owned and operated. We cherish our independence because it motivates us to care about everything that happens within our company.

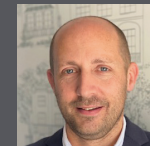
**LexAllan  
Grove**  
LAND & NEW HOMES



**Helen Cooksey**  
New Home Sales  
01562 270072  
helen.cooksey@lexallangrove.com



**Louise Hogarth**  
Land & New Homes Co-ordinator  
01562 270072  
louise.hogarth@lexallangrove.com



**James Skelding**  
Land & New Home Manager  
07722 005056  
james.skelding@lexallangrove.com



**Dean Grove**  
Land & New Homes Director  
07950 608 002  
dean.grove@lexallangrove.com

01562 270072

inh@lexallangrove.com

lexallangrove.com



LAND & NEW HOMES  
NETWORK